



STANDING SEAM ROOFING IS IN KENYA; Newlok At The Crystal Rivers Mall!

Safaricom Limited is Eastern Africa's biggest commercial enterprise which manifests the winning possibilities of a partnership between local and global players. The affiliated Safaricom Staff Pension Scheme (SSPS) is one of Kenya's largest and a prime player in the real estate sector. The Crystal River's Mall & Gated Community (CRMGC) in Athiriver, Machakos county is a Kes. 3.5 billion jewel-in-the-crown of SSPS's grand ambitions, a 25 acre mixed-use development of 20,000 sqM lettable mall area that at once demands attention along Kenya's main arterial thoroughfare, the Mombasa-Nairobi highway that is a part of the great northern Cape-to-Cairo corridor. This is a focal landmark that articulates the rapid development story of Machakos county as a satellite of Kenya capital, Nairobi.

It was in this context that the client and lead consultants – Mutiso Menezes International of Kenya & Paragon Architects of South Africa–

sought a roof that would reflect the image, presence and functionality of this edifice.

Mabati Rolling Mills Ltd (MRM) did not disappoint. This was standing seam territory without a doubt. In their Newlok profile, MRM offered a perfect cover to match the class, safety and performance requirements at Crystal Rivers, indeed a new roof language for Kenya's retail and prime commercial segment. Though Crystal Rivers was Newlok's first major project deployment in Kenya, in MRM's holding SAFAL Group lay the necessary pedigree steer such projects to success across any of the operative twelve East & Southern African countries. Their projects & operations teams dispensed with cross-border transfer of the Newlok plant from its (then) Ugandan abode and mobilized at for profiling towards end 2017, having earlier supplied all the Colourplus steel coils. To deliver the immense promise of Newlok, the main contractor, the roofing subcontractor, the project consultants

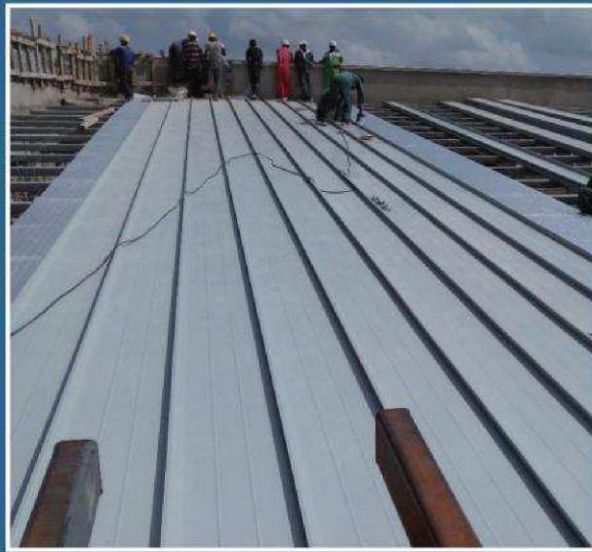
and MRM worked well in tandem. Installation training for the contractor's team and midwifing the installation process initially was given via an expert flown in from the group's South African operation. The first of 22.3 metre long panels rolled off the mobile mill at 11.48AM on a cold, wet Saturday; the 18th of November to great excitement of the entire project construction team. Over the next fortnight, all sheeting to cover over 75% of the mall roof were ready as the installation team pushed hard to cover the over 8,000 square metres of roof area as finishing works held processing of the daunting 48.5M longest pieces for Zone C that would house the mall's anchor tenant.

From initial baby steps, installation also gathered pace to cover over 70% of the roof area by new year, 2018. Newlok was now firmly part of Kenya's mall aesthetic!

In Newlok, MRM introduces the construction project segment in Kenya to:-



The architectural aerial impression of the Crystal Rivers Mall & Gated Community, off Mombasa-Nairobi highway, Athi river



The specialist fabricator installs Kenya's first Newlok roof cover



The over 28M length Newlok sheets for segment 2 arrive on the deck via crane for installation

- a standing seam, concealed-fix profile that is virtually leak-proof,
- can span up to 100 metres in single runs, eliminating the need for expensive, unsightly end-laps,
- possesses superior wind-uplift resistance to any other concealed-fix product regionally
- can be applied on roof slopes from a low of 1.5° off the horizontal with attendant design flexibility and
- promises a more aesthetic finish free of fastener dotting.

The great wheel of innovation at MRM continues to turn. With every cycle comes immense and industry-turning products and services which benefit the industry and our environment; the latter an area of considerable attention not just at MRM but for all stakeholders.

Following in the mantra of Kenya's celebrated environmentalist and Nobel Laureate, the late Prof Wangari Maathai, all must focus on doing their 'little thing' for mother earth. At MRM, the next little thing constitutes metallic paint finishes with high solar reflectance, revamped rain-water harvesting and green energy installation systems that promise great rewards for green-energy and sustainable development experts.

These and more are the stuff that puts gloss on MRM and SAFAL Group's status as Africa's largest roofing company. VIVA MRM, VIVA SAFAL, VIVA NEWLOK!!!



The first 22.3M long Newlok sheets in Kenya are site-profiled at Crystal Rivers, Athi river

Copyright © 2018 Gate5.